

Bridge ATC, High Street

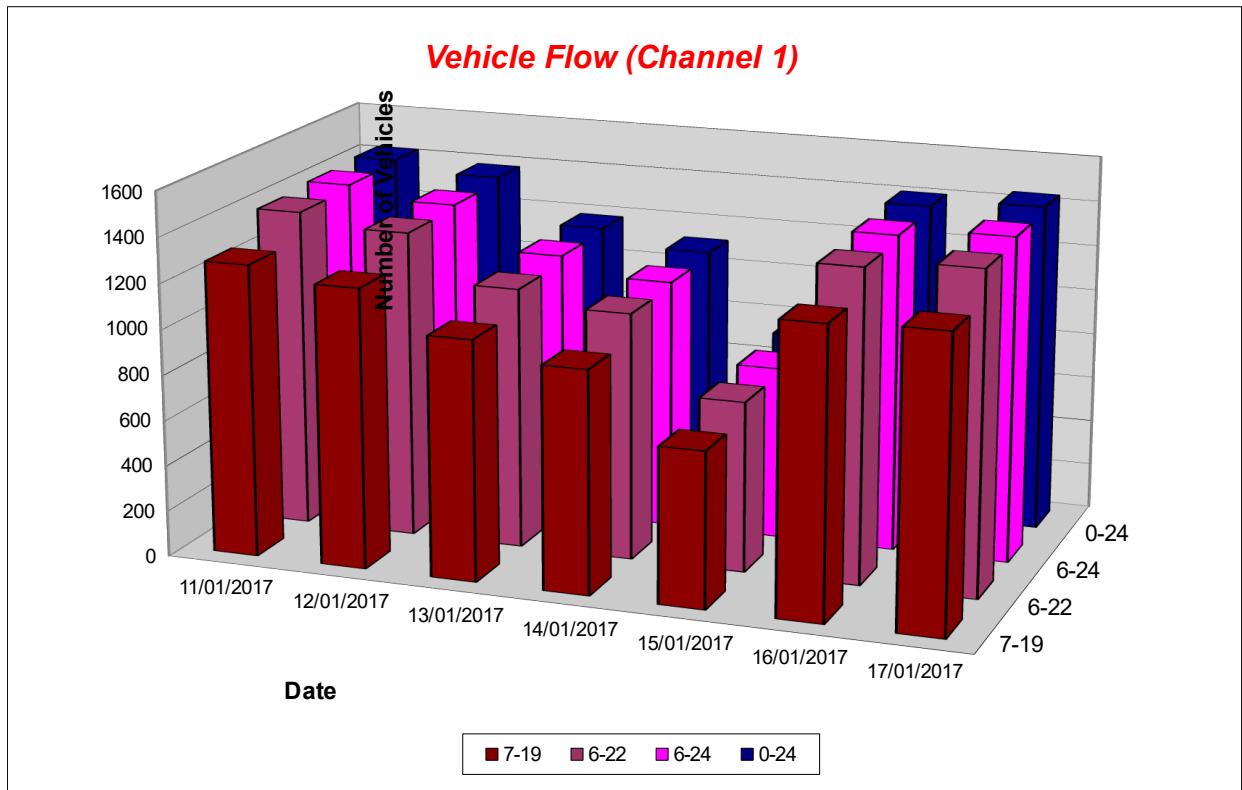
Produced by Road Data Services Ltd.

Channel 1 - Northwestbound

Vehicle Flow

Week 1

Hr Ending	11/01/2017 Wednesday	12/01/2017 Thursday	13/01/2017 Friday	14/01/2017 Saturday	15/01/2017 Sunday	16/01/2017 Monday	17/01/2017 Tuesday	5 Day Ave	7 Day Ave
1	2	3	1	6	10	0	2	2	3
2	0	0	1	3	3	0	1	0	1
3	0	1	0	2	0	0	0	0	0
4	0	0	0	1	0	1	1	0	0
5	4	6	4	3	2	1	2	3	3
6	6	9	5	3	0	14	12	9	7
7	28	32	22	11	8	23	30	27	22
8	128	105	66	29	14	112	119	106	82
9	160	159	134	75	38	167	183	161	131
10	126	147	117	101	47	138	141	134	117
11	113	101	89	122	60	101	110	103	99
12	88	116	74	131	70	104	100	96	98
13	86	110	66	97	84	89	100	90	90
14	89	77	64	81	72	73	89	78	78
15	94	79	78	97	91	104	87	88	90
16	142	128	134	65	67	125	131	132	113
17	92	67	81	64	49	102	84	85	77
18	96	69	78	57	46	81	69	79	71
19	68	67	70	53	41	61	59	65	60
20	41	46	32	50	25	44	59	44	42
21	26	31	22	30	18	28	31	28	27
22	22	14	17	19	16	17	14	17	17
23	10	11	17	4	6	17	8	13	10
24	6	4	13	12	6	4	10	7	8
7-19	1282	1225	1051	972	679	1257	1272	1217	1105
6-22	1399	1348	1144	1082	746	1369	1406	1333	1213
6-24	1415	1363	1174	1098	758	1390	1424	1353	1232
0-24	1427	1382	1185	1116	773	1406	1442	1368	1247



Bridge ATC, High Street

Produced by Road Data Services Ltd.

Channel 1 - Northwestbound

Average Speed

Week 1

Hr Ending	11/01/2017 Wednesday	12/01/2017 Thursday	13/01/2017 Friday	14/01/2017 Saturday	15/01/2017 Sunday	16/01/2017 Monday	17/01/2017 Tuesday
1	41.6	33.9	35.3	25.4	23.1	-	27.9
2	-	-	24.4	28.7	24.6	-	26.7
3	-	43.6	-	27.2	-	-	-
4	-	-	-	42.9	-	21.8	22.5
5	35.8	28.4	25.6	31.3	33.4	31.7	34.4
6	31.8	31.3	29.2	29.5	-	31.0	24.1
7	31.6	28.5	24.4	27.0	24.2	31.2	30.3
8	25.8	24.2	18.4	27.0	27.6	25.9	25.0
9	21.2	21.6	13.4	24.3	21.5	19.8	20.6
10	22.0	22.3	16.9	22.0	24.9	22.2	22.1
11	21.2	20.3	21.1	21.3	23.4	21.2	19.9
12	20.7	22.1	19.4	20.4	23.7	22.7	20.7
13	23.9	22.6	21.8	23.0	24.2	20.2	22.1
14	24.4	21.7	22.4	23.7	23.3	21.8	22.0
15	21.4	22.0	22.7	24.2	22.7	20.5	22.2
16	21.7	18.3	20.5	22.2	23.8	19.2	18.7
17	20.2	18.3	19.9	24.2	25.8	20.7	23.1
18	20.8	22.2	20.3	24.1	23.4	22.6	25.7
19	22.2	23.3	25.3	24.5	26.1	25.6	25.7
20	26.2	15.0	22.0	24.3	26.3	28.0	25.7
21	25.5	16.7	27.2	25.0	29.2	26.5	25.7
22	23.7	21.0	25.2	27.5	24.6	31.5	28.6
23	24.2	25.6	27.7	29.5	26.4	28.9	27.0
24	31.4	22.9	24.7	28.8	32.1	30.5	24.6

10-12	21.0	21.2	20.3	20.9	23.6	21.9	20.3
14-16	21.6	19.7	21.3	23.4	23.2	19.8	20.1
0-24	22.7	21.6	20.3	23.3	24.2	22.4	22.5

Average	22.3
---------	------

Channel 1 - Northwestbound

85th Percentile

Hr Ending	11/01/2017 Wednesday	12/01/2017 Thursday	13/01/2017 Friday	14/01/2017 Saturday	15/01/2017 Sunday	16/01/2017 Monday	17/01/2017 Tuesday
1	49.3	39.1	-	30.6	29.1	-	36.2
2	-	-	-	35.2	26.2	-	-
3	-	-	-	31.2	-	-	-
4	-	-	-	-	-	-	-
5	41.9	34.0	29.1	35.2	40.5	-	37.3
6	41.4	41.4	34.5	37.5	-	36.7	33.4
7	37.6	36.1	29.2	33.1	33.5	37.7	37.1
8	31.8	31.0	28.3	33.1	34.8	32.5	32.2
9	29.3	29.2	24.1	31.6	28.7	27.7	28.8
10	29.7	30.3	27.6	29.8	32.8	29.9	30.6
11	29.1	28.2	29.3	29.7	30.3	29.1	27.4
12	28.1	29.2	29.7	29.4	31.6	29.8	30.4
13	30.9	30.2	29.3	30.3	31.1	29.2	29.7
14	31.1	28.7	30.1	31.7	31.4	29.3	30.1
15	28.8	29.5	29.4	31.5	31.6	29.3	30.2
16	29.6	26.4	28.5	30.1	31.3	28.2	28.7
17	28.6	28.2	28.9	30.1	31.4	28.9	31.0
18	27.9	31.5	31.2	31.1	31.7	31.6	32.8
19	29.6	29.9	32.6	32.2	34.3	31.8	32.3
20	33.3	24.0	31.8	30.8	36.9	36.5	31.5
21	30.7	26.6	35.8	30.9	35.5	34.3	31.8
22	32.7	28.6	33.6	34.5	36.8	36.8	36.2
23	31.6	31.9	33.1	33.7	31.3	37.4	32.2
24	38.5	31.6	29.7	35.4	35.4	32.6	30.9

10-12	29.1	28.2	29.3	29.7	30.3	29.1	27.4
14-16	29.5	27.7	29.0	30.6	31.5	28.7	29.4
0-24	30.3	29.7	29.5	30.8	32.1	30.5	30.6

85th %ile	30.4
-----------	------

Bridge ATC, High Street

Produced by Road Data Services Ltd.

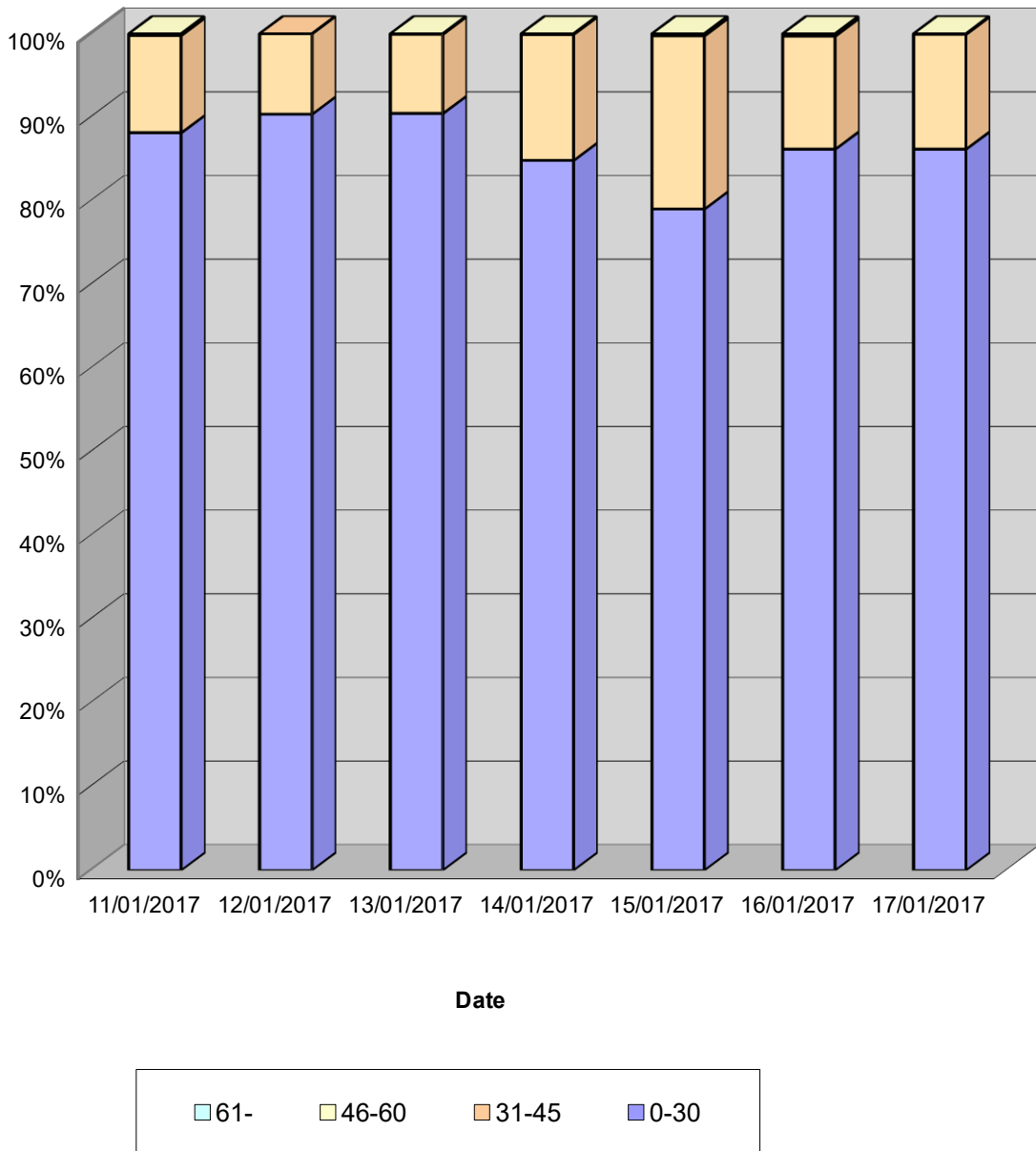
Channel 1 - Northwestbound

Speed Summary

Week 1

Speed (MPH)	11/01/2017 Wednesday	12/01/2017 Thursday	13/01/2017 Friday	14/01/2017 Saturday	15/01/2017 Sunday	16/01/2017 Monday	17/01/2017 Tuesday
0-30	1258	1249	1072	947	611	1212	1243
31-45	166	133	112	168	160	190	198
46-60	3	0	1	1	2	4	1
61-	0	0	0	0	0	0	0
TOTAL	1427	1382	1185	1116	773	1406	1442

Speed Summary (MPH)



Bridge ATC, High Street

Produced by Road Data Services Ltd.

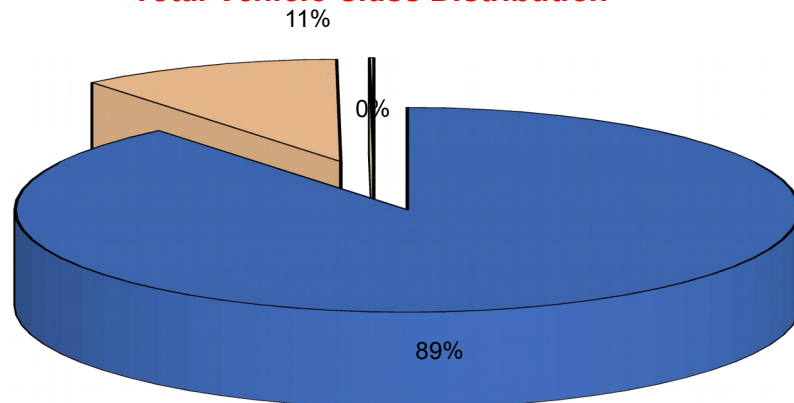
Channel 1 - Northwestbound

Vehicle Class

Week 1

Classes Day / Time	Car / LGV / Caravan - 1	OGV1 / Bus - 2,3,5,6,7,12	OGV2 - 4,8,9,10,11,13	TOTAL - 1-13
11/01/2017				
7-19	1140	142	0	1282
6-22	1244	155	0	1399
6-24	1259	156	0	1415
0-24	1270	157	0	1427
12/01/2017				
7-19	1078	146	1	1225
6-22	1183	164	1	1348
6-24	1193	169	1	1363
0-24	1209	172	1	1382
13/01/2017				
7-19	925	124	2	1051
6-22	1005	137	2	1144
6-24	1032	139	3	1174
0-24	1039	143	3	1185
14/01/2017				
7-19	883	87	2	972
6-22	976	104	2	1082
6-24	991	105	2	1098
0-24	1005	109	2	1116
15/01/2017				
7-19	627	51	1	679
6-22	688	57	1	746
6-24	699	58	1	758
0-24	713	59	1	773
16/01/2017				
7-19	1121	132	4	1257
6-22	1225	140	4	1369
6-24	1243	142	5	1390
0-24	1255	146	5	1406
17/01/2017				
7-19	1136	135	1	1272
6-22	1256	148	2	1406
6-24	1273	149	2	1424
0-24	1286	153	3	1442
Average				
7-19	987	117	2	1105
6-22	1082	129	2	1213
6-24	1099	131	2	1232
0-24	1111	134	2	1247

Total Vehicle Class Distribution



Bridge ATC, High Street

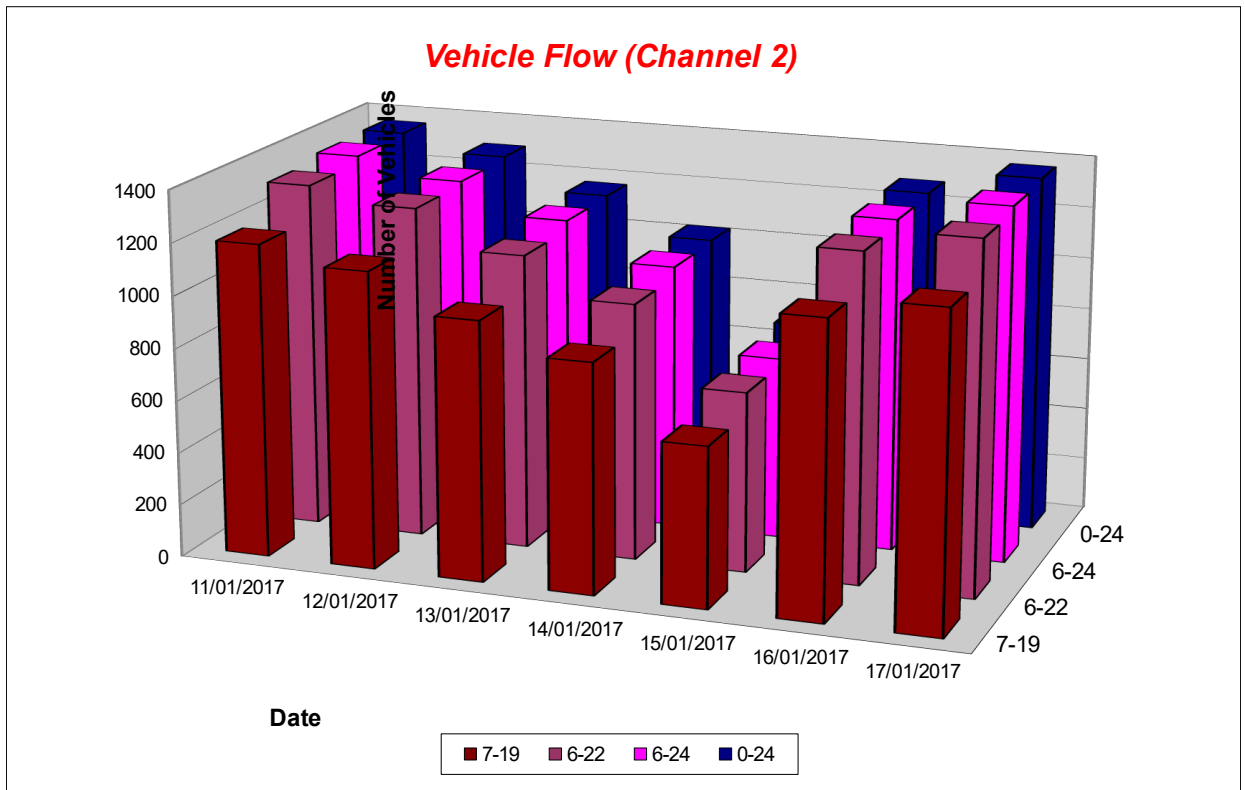
Produced by Road Data Services Ltd.

Channel 2 - Southeastbound

Vehicle Flow

Week 1

Hr Ending	11/01/2017 Wednesday	12/01/2017 Thursday	13/01/2017 Friday	14/01/2017 Saturday	15/01/2017 Sunday	16/01/2017 Monday	17/01/2017 Tuesday	5 Day Ave	7 Day Ave
1	3	1	0	1	13	0	1	1	3
2	0	1	0	1	4	1	0	0	1
3	0	1	0	1	1	0	0	0	0
4	1	1	0	1	0	0	2	1	1
5	1	4	1	1	1	1	5	2	2
6	2	1	4	1	0	5	4	3	2
7	11	9	17	2	2	8	9	11	8
8	43	45	28	10	12	38	42	39	31
9	111	118	130	26	17	98	110	113	87
10	73	64	76	71	44	80	83	75	70
11	88	88	69	91	64	72	72	78	78
12	111	86	62	101	56	88	114	92	88
13	80	97	84	104	68	87	104	90	89
14	90	74	64	78	73	80	106	83	81
15	116	123	110	79	51	111	128	118	103
16	124	108	96	89	61	104	118	110	100
17	116	134	100	105	70	138	120	122	112
18	140	121	98	72	56	137	118	123	106
19	104	74	71	48	37	83	77	82	71
20	62	71	56	45	34	59	59	61	55
21	27	41	34	25	21	35	44	36	32
22	29	18	32	34	21	35	31	29	29
23	19	6	24	14	10	14	13	15	14
24	7	7	13	25	3	5	9	8	10
7-19	1196	1132	988	874	609	1116	1192	1125	1015
6-22	1325	1271	1127	980	687	1253	1335	1262	1140
6-24	1351	1284	1164	1019	700	1272	1357	1286	1164
0-24	1358	1293	1169	1025	719	1279	1369	1294	1173



Bridge ATC, High Street

Produced by Road Data Services Ltd.

Channel 2 - Southeastbound

Average Speed

Week 1

Hr Ending	11/01/2017 Wednesday	12/01/2017 Thursday	13/01/2017 Friday	14/01/2017 Saturday	15/01/2017 Sunday	16/01/2017 Monday	17/01/2017 Tuesday
1	33.5	30.3	-	33.6	25.9	-	33.3
2	-	37.8	-	17.4	24.7	34.6	-
3	-	22.9	-	27.2	35.2	-	-
4	39.5	39.2	-	29.3	-	-	23.5
5	26.7	31.6	21.6	45.7	30.8	31.8	29.3
6	28.0	31.2	28.2	29.2	-	24.8	30.9
7	29.7	29.2	25.5	21.8	25.0	25.4	24.0
8	25.1	24.7	22.4	26.8	26.9	24.2	24.8
9	24.0	22.0	20.0	26.3	22.6	23.3	23.1
10	23.1	23.9	19.4	22.3	25.0	23.5	23.5
11	23.8	22.4	23.6	22.8	25.8	23.1	22.1
12	23.2	25.1	24.9	23.5	24.9	22.9	23.6
13	24.2	24.8	23.1	24.5	25.0	24.9	24.1
14	24.8	23.5	25.8	24.3	25.4	24.9	24.2
15	22.6	23.3	23.4	22.9	23.8	24.4	23.3
16	21.7	23.5	22.1	24.1	25.2	22.5	22.5
17	23.6	24.6	23.8	24.2	26.2	25.6	24.9
18	22.7	24.4	23.6	26.5	25.9	24.5	25.2
19	25.5	23.5	25.6	25.6	28.2	26.3	26.3
20	26.9	17.6	26.3	24.5	26.8	26.8	25.2
21	25.8	19.0	23.7	26.2	28.2	26.2	27.3
22	24.9	21.8	27.2	27.7	30.8	26.3	27.7
23	27.1	28.9	28.4	27.8	25.9	27.8	27.5
24	34.1	30.5	25.3	27.6	26.7	31.8	26.7

10-12	23.4	23.7	24.2	23.2	25.4	23.0	23.0
14-16	22.1	23.4	22.8	23.5	24.5	23.5	22.9
0-24	24.0	23.4	23.4	24.5	25.8	24.5	24.3

Average 24.2

Channel 2 - Southeastbound

85th Percentile

Hr Ending	11/01/2017 Wednesday	12/01/2017 Thursday	13/01/2017 Friday	14/01/2017 Saturday	15/01/2017 Sunday	16/01/2017 Monday	17/01/2017 Tuesday
1	41.1	-	-	-	31.0	-	-
2	-	-	-	-	35.0	-	-
3	-	-	-	-	-	-	-
4	-	-	-	-	-	-	24.2
5	-	36.3	-	-	-	-	31.5
6	34.5	-	33.3	-	-	28.9	38.6
7	34.1	34.8	30.3	25.3	26.2	30.2	32.6
8	30.8	30.7	27.8	32.5	31.0	29.8	29.8
9	29.9	29.5	28.2	33.2	29.2	29.7	29.1
10	29.9	29.6	28.5	29.8	30.6	30.1	29.5
11	29.7	29.7	30.0	29.3	30.5	29.7	29.2
12	29.7	29.5	30.5	29.8	30.5	29.7	30.1
13	29.9	30.8	29.8	29.8	31.4	29.8	28.4
14	30.4	29.7	30.6	29.8	31.0	30.0	30.1
15	28.3	29.5	30.0	29.7	29.7	29.8	29.4
16	28.2	29.8	29.1	29.6	29.9	29.4	29.7
17	29.9	29.8	29.3	29.6	31.6	30.8	29.7
18	29.2	30.1	30.2	30.3	31.3	29.5	30.6
19	31.5	30.4	31.1	30.1	35.7	30.5	30.7
20	31.6	22.9	32.5	30.1	33.9	31.6	31.6
21	33.4	25.5	31.4	31.3	34.7	32.2	32.7
22	34.5	28.2	33.4	31.8	35.1	33.4	33.8
23	30.1	32.6	30.8	30.6	32.2	32.9	32.3
24	41.7	33.7	30.1	32.8	33.0	36.2	34.5

10-12	29.7	29.7	30.0	29.3	30.5	29.7	29.2
14-16	28.3	29.6	29.4	29.7	29.9	29.7	29.5
0-24	30.1	29.8	30.1	30.2	31.6	30.4	30.0

85th %ile 30.2

Bridge ATC, High Street

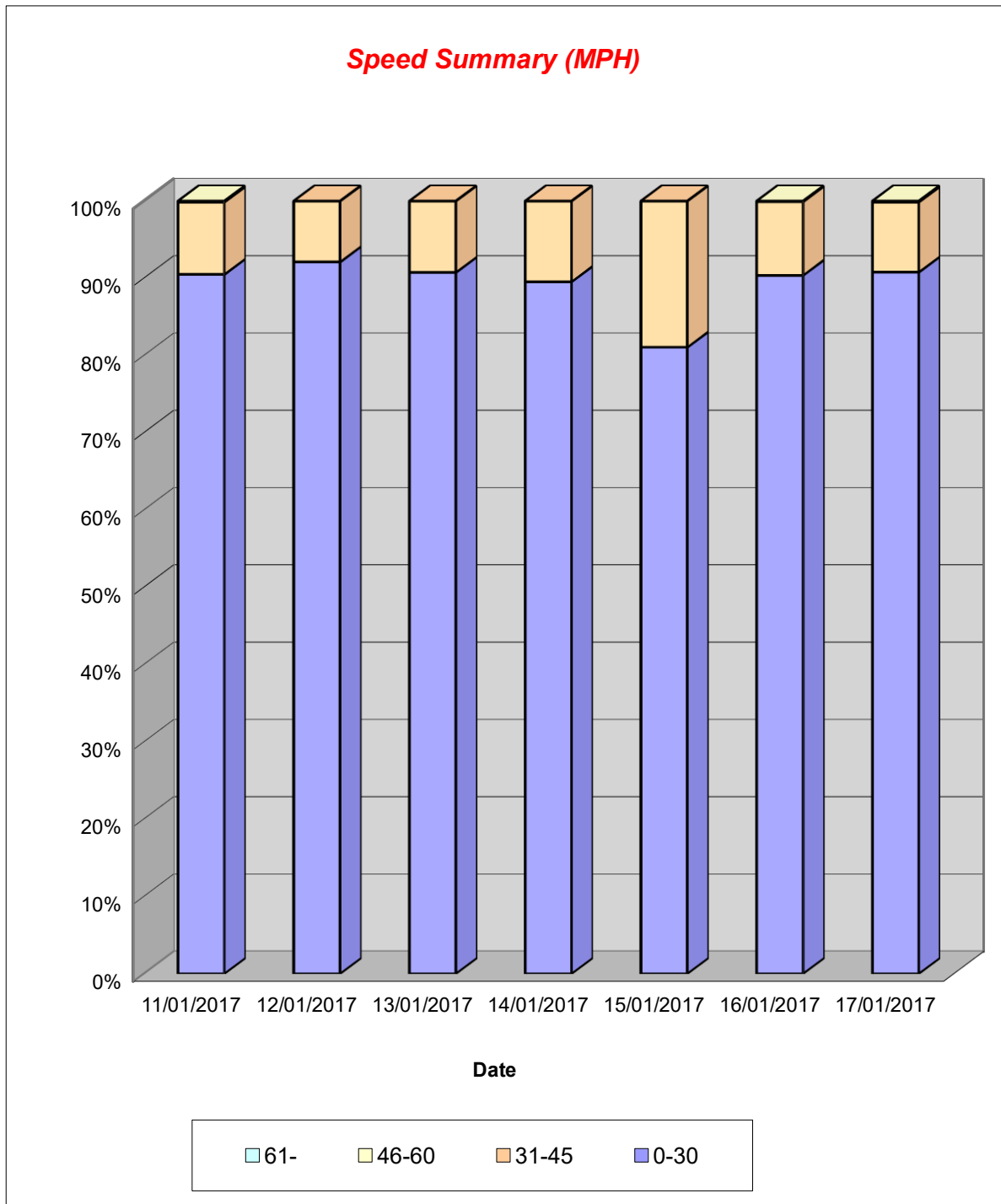
Produced by Road Data Services Ltd.

Channel 2 - Southeastbound

Speed Summary

Week 1

Speed (MPH)	11/01/2017 Wednesday	12/01/2017 Thursday	13/01/2017 Friday	14/01/2017 Saturday	15/01/2017 Sunday	16/01/2017 Monday	17/01/2017 Tuesday
0-30	1229	1191	1061	918	583	1156	1243
31-45	127	102	108	107	136	122	124
46-60	2	0	0	0	0	1	2
61-	0	0	0	0	0	0	0
TOTAL	1358	1293	1169	1025	719	1279	1369



Bridge ATC, High Street

Produced by Road Data Services Ltd.

Channel 2 - Southeastbound

Vehicle Class

Week 1

Classes Day / Time	Car / LGV / Caravan - 1	OGV1 / Bus - 2,3,5,6,7,12	OGV2 - 4,8,9,10,11,13	TOTAL - 1-13
11/01/2017				
7-19	1042	147	7	1196
6-22	1156	162	7	1325
6-24	1179	165	7	1351
0-24	1184	167	7	1358
12/01/2017				
7-19	968	159	5	1132
6-22	1076	190	5	1271
6-24	1082	197	5	1284
0-24	1089	199	5	1293
13/01/2017				
7-19	805	177	6	988
6-22	925	196	6	1127
6-24	959	199	6	1164
0-24	962	201	6	1169
14/01/2017				
7-19	778	95	1	874
6-22	872	107	1	980
6-24	905	113	1	1019
0-24	908	116	1	1025
15/01/2017				
7-19	542	67	0	609
6-22	616	71	0	687
6-24	628	72	0	700
0-24	644	75	0	719
16/01/2017				
7-19	975	138	3	1116
6-22	1095	155	3	1253
6-24	1110	159	3	1272
0-24	1112	164	3	1279
17/01/2017				
7-19	1022	166	4	1192
6-22	1155	176	4	1335
6-24	1174	179	4	1357
0-24	1181	184	4	1369
Average				
7-19	876	136	4	1015
6-22	985	151	4	1140
6-24	1005	155	4	1164
0-24	1011	158	4	1173

Total Vehicle Class Distribution

